



Explora
JOURNEYS

EXPLORA I

EXPERIENCE HIGHLIGHTS

JULY 2021

4 luxury
best-in-class ships

Designed with
guest centricity and
home-like comfort
in mind

Emphasis on quality,
attention to detail

The perfect blend of
vibrant and intimate
spaces



248 m (814 ft)
length

63,900 GRT

461 suites





Designed in partnership with the world's foremost **superyacht** and **luxury hospitality designers**.

With the perfect
blend of
intimate and
vibrant spaces,
our ships are
designed to
create **choice**
and **space**.



LOBBY AND LOBBY BAR

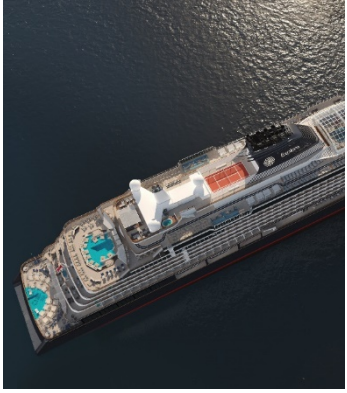


AFT POOL ON DECK 5

Our perfect hosts welcome our guests to a **refined** and **generous** **all-inclusive** journey.

ALL JOURNEYS INCLUDE:

- Authentic, intuitive service from our team of hospitality experts
 - Sophisticated dining at 9 culinary venues, including In-suite dining
 - Unlimited beverages, fine wines and premium spirits available at all times, including in-suite mini-bar
 - Access to the spa thermal area
 - Wellbeing and fitness programs onboard and at the destinations
 - All onboard gratuities
 - High-speed unlimited Wi-Fi throughout the ship
 - Shuttle services from port to city centre
(where required/available)
- Plus additional inclusions and services for guests staying in Penthouses and Residences



Ships' Delivery Schedule

4 luxury cruise ships built by Fincantieri in Italy

2023



EXPLORA I

2024



EXPLORA II

2025



EXPLORA III

2026



EXPLORA IV

Technical Characteristics

Gross Tonnage 63,900 GT

Length overall 248 m
(~ 813 ft)

Beam ~ 32 m
(~ 105 ft)

Height above waterline 56 m
(~ 184 ft)

Speed (max) 18 knots

Number of decks 14

Number of suites 461

Number of guests ~ 900

Number of crew members 640

Guests per crew member ratio 1.25 : 1
Category-leading

Total public space ~ 16,600 sqm
(~ 178,680 sq ft)

Total outdoor public space ~ 6,250 sqm
(~ 67,275 sq ft)

Outdoor space per guest 6,5 sqm
(~ 70 sq ft)



EXPLORA I Fact sheet

461 all ocean-front suites

- 1 Owners' Residence
- 22 Ocean Residences
- 67 Ocean Penthouses
- 371 Ocean and Ocean Terrace Suites
- Over 82 multi-gen-friendly connecting suites

featuring

- Private terraces that are amongst the largest in the category
- Large floor-to-ceiling windows with luminous interiors

9 distinct dining experiences

- Focused on healthy food and local sustainable sources

Sophisticated entertainment options

- Several indoor and outdoor bar and lounge experiences with curated entertainment and intimate performances
- Casino
- Art Gallery
- Curated shopping experiences

Generous outdoor decks

- 3 outdoor pools
- 1 indoor pool with retractable glass roof
- 64 private cabanas
- Several indoor and outdoor whirlpools
- Poolside dining and lounging

All-around wellness and fitness

- Over 700 sqm (7,500 sq ft) of indoor and outdoor wellness facilities
- Spacious thermal area
- 9 treatment rooms
- Beauty salon
- Over 270 sqm (2,900 sq ft) of fitness facilities with latest equipment
- Fitness studio for group or personal trainings
- Panoramic running track

The latest environmental-supporting technologies

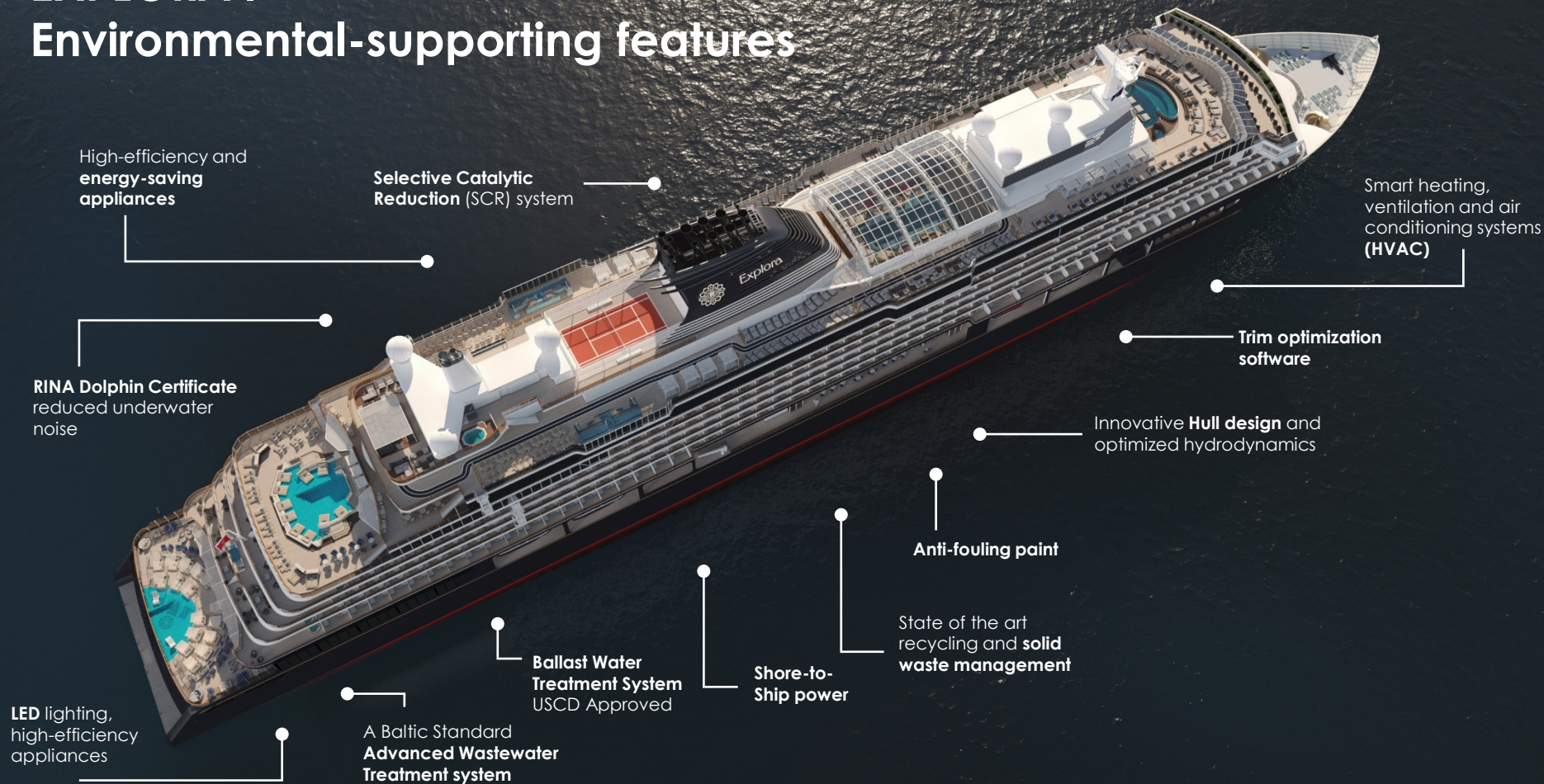
- Hybrid-ready energy solutions
- Waste-management and energy-saving solutions
- No single-plastic used onboard and ashore

Care for
nature and people



EXPLORA I

Environmental-supporting features



High-efficiency and energy-saving appliances

Selective Catalytic Reduction (SCR) system

Smart heating, ventilation and air conditioning systems (HVAC)

RINA Dolphin Certificate reduced underwater noise

Trim optimization software

Innovative Hull design and optimized hydrodynamics

Anti-fouling paint

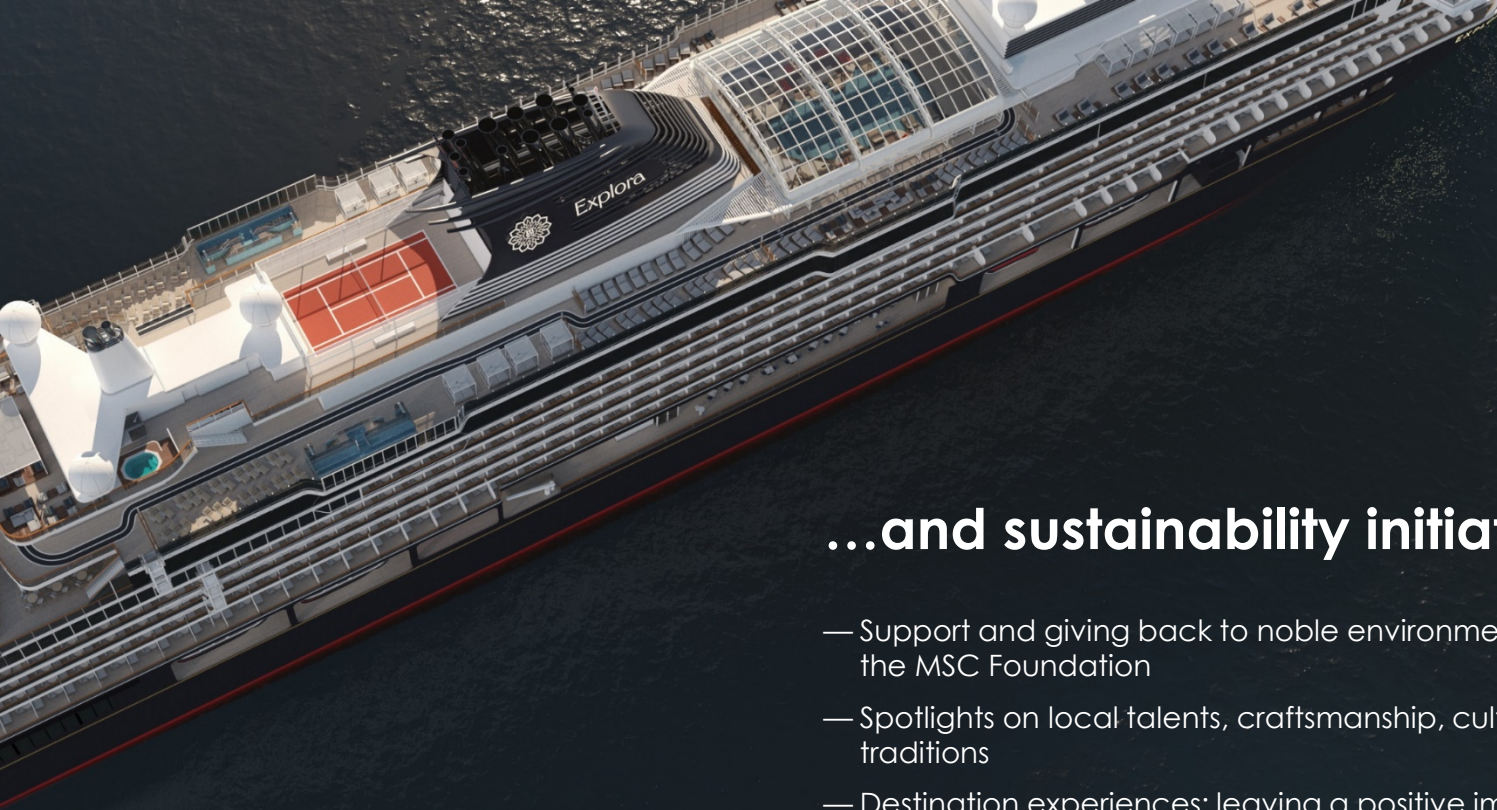
State of the art recycling and solid waste management

LED lighting, high-efficiency appliances

A Baltic Standard Advanced Wastewater Treatment system

Ballast Water Treatment System USCD Approved

Shore-to-Ship power



...and sustainability initiatives

- Support and giving back to noble environmental causes through the MSC Foundation
- Spotlights on local talents, craftsmanship, culture, gastronomy, traditions
- Destination experiences: leaving a positive impression and footprint on the places and people we visit
- Suppliers' certification
- Crew welfare: development, training, diversity



An ocean-front
all-suite experience
with the **comfort of
home**



FEATURES AND SERVICES

IN-SUITE TECHNOLOGY

- Complimentary Wi-Fi
- Infotainment system with Smart TV and easy connectivity to personal devices
- Smartphone app for access to all services
- Telephones with voicemail
- On-demand TV options
- Wireless charging base on bedside tables
- Individual climate control in each suite

SERVICES

- 24-hour butler services¹
- 24-hour concierge services
- 24-hour in-suite dining
- 24-hour laundry, dry-cleaning and ironing services²
- Twice-daily housekeeping services, including evening turndown service
- Shoeshine service

BUTLER SERVICES¹

- Packing and unpacking to the guests' preferences
- Pressing and laundering assistance
- Private in-suite dining
- Personal communication through our app and on messenger platforms
- Itinerary and transport planning
- Celebrations planning
- Onboard and ashore reservations assistance

¹ Available for Ocean Residences

² Additional charges may apply

GUEST SUITES – DETAILED OVERVIEW

	Suite Name	Decks	Total Suite Area, sqm (~sq ft)	Suite Area, sqm (~sq ft)	Terrace Area, sqm (~sq ft)	Qty
371 Ocean Suites	OCEAN SUITE OS1/OS4	6-7-8-9-10	35 (377)	28 (301)	7 (75)	301
	OCEAN TERRACE SUITE TS	6-7	39 (420)	28 (301)	11 (118)	70
67 Ocean Penthouses	PENTHOUSE PH1	7-8-9	43 (463)	34 (366)	9 (97)	7
		6	48 (517)	34 (366)	14 (151)	
	PENTHOUSE PHX1	9-10	48 (517)	38 (409)	10 (108)	8
		8-9-10	52 (560)	42 (452)	10 (108)	
	PENTHOUSE PH2	6	53 (570)	43 (463)	10 (108)	42
		7	61 (657)	43 (463)	18 (194)	
	PENTHOUSE PH3	7-8-9-10	60 (646)	47 (506)	13 (140)	10
		6	68 (732)	47 (506)	21 (226)	
22 Ocean Residences	RESIDENCE RS4	7-8-9-10	70 (753)	56 (603)	14 (151)	10
		6	80 (861)	56 (603)	24 (258)	
	RESIDENCE RS5	8-9	77 (829)	63 (678)	14 (151)	6
		7	81 (872)	63 (678)	18 (194)	
	RESIDENCE RS6	7	113 (1,216)	60 (646)	53 (570)	4
		9	126 (1,356)	60 (646)	66 (710)	
	RESIDENCE RS7	6	149 (1,604)	74 (797)	75 (807)	2
1 Owners' Residence	OWNERS' RESIDENCE OR	8	280 (3,014)	155 (1,668)	125 (1,345)	1
					Total	461

The Ocean Suites & Ocean Terrace Suites

Amongst the **largest** in the category, starting at 35 sqm (377 sq ft).

All **ocean-front** with private terraces,
featuring large floor-to-ceiling windows.

371 Ocean Suites and Ocean Terrace Suites

Total Suite area: 35-39 sqm (377-420 sq ft)

Suite: 28 sqm (301 sq ft)

Terrace: 7-11 sqm (75-118 sq ft)

SUITE FEATURES

- Oversized floor-to-ceiling windows with views of the sea
- Lounge area with flexible coffee/dining table
- Private refrigerated mini-bar, replenished according to the guests' preferences
- Espresso machine and tea maker with a complimentary selection of coffee and teas
- Safe accommodating most tablets and laptops
- Maximum capacity: 2 adults / some suites with a capacity for 2 adults and 1 child under 18 years

OUTDOOR

- Spacious oceanfront terrace with a dining area
- Comfortable daybeds for relaxation

BEDROOM

- Bespoke queen-sized bed or twin beds sleep system
- Down duvets and pillows
- Extensive pillow selection
- Spacious walk-in wardrobe with a seated vanity area

BATHROOM

- Spacious bathroom with a walk-in shower¹
- Plush bathrobes and slippers
- Custom bath toiletries and amenities
- Hairdryer and lighted make-up/shaving mirror

¹ Some suites with bathtubs and ADA facilities





The Ocean Penthouses

with a space over **43 sqm (463 sq ft)**, large floor-to-ceiling windows, and a spacious terrace.

67 Ocean Penthouses

Total Suite area: 43-68 sqm (463-732 sq ft)

Suite: 34-47 sqm (366-506 sq ft)

Terrace: 9-21 sqm (97-226 sq ft)

SUITE FEATURES

- Spacious lounge area
- Some suites feature separate living, dining and sleeping areas
- Dining table for 4 guests
- Spacious work desk area
- Private refrigerated mini-bar, replenished according to the guests' preferences
- Espresso machine and tea maker with a complimentary selection of coffee and teas
- Safe accommodating most tablets and laptops
- Maximum capacity: 2 adults / some suites with a capacity for 2 adults and 2 children under 18 years

OUTDOOR

- Spacious oceanfront terrace with a dining area
- Comfortable daybeds for relaxation

BEDROOM

- Bespoke queen-sized bed or twin beds sleep system
- Down duvets and pillows
- Some suites feature a double sofa bed
- Extensive pillow selection
- Spacious walk-in wardrobe with a seated vanity area

BATHROOM

- Spacious bathroom with a walk-in shower¹
- Plush bathrobes and slippers
- Custom bath toiletries and amenities
- Hairdryer and lighted make-up/shaving mirror

¹ Some suites with bathtubs and ADA facilities





The Ocean Residences

with a space over **70 sqm (753 sq ft)**,
all with a private outdoor whirlpool, expansive deck space,
and a private dining room.

22 Ocean Residences

Total Suite area: 70-149 sqm (753-1,604 sq ft)

Suite: 56-74 sqm (603-797 sq ft)

Terrace: 14-75 sqm (151-807 sq ft)

SUITE FEATURES

- Private butler services
- Oversized floor-to-ceiling windows with views of the sea
- Separate living, dining and sleeping areas
- Spacious lounge area
- Dining table for 4 or 6 guests
- Spacious work desk area
- Private refrigerated mini-bar, replenished according to the guests' preferences
- Espresso machine and tea maker with a complimentary selection of coffee and teas
- Laptop-size safe
- Maximum capacity: 2 adults and 2 children

OUTDOOR

- Panoramic oceanfront terrace with private outdoor whirlpool, a dining table and sun loungers

BEDROOM

- Bespoke king-sized bed sleep system
- Large double sofa bed
- Down duvets and pillows
- Extensive pillow selection
- Large walk-in wardrobe with a seated vanity area

BATHROOM

- Luxurious marble bathroom with a bathtub or a separate walk-in shower (some suites feature both)
- Plush bathrobes and slippers
- Custom bath toiletries and amenities
- Hairdryer and lighted make-up/shaving mirror





The iconic Owners' Residence

with a signature **lounge** and **dining area**,
and a panoramic ocean-front outdoor area
with a spacious private whirlpool.

1 Owners' Residence

Total Suite area: 280 sqm (3,014 sq ft)

Suite: 155 sqm (1,668 sq ft)

Terrace: 125 sqm (1,345 sq ft)

SUITE FEATURES

- Dedicated private butler services
- Oversized floor-to-ceiling windows with views of the sea
- Separate living, dining and sleeping areas
- Abundant lounge area with fireplace
- Dining table for 8 guests
- Spacious work desk area
- Private bar, replenished according to the guests' preferences
- Espresso machine and tea maker with a complimentary selection of coffee and teas
- Laptop-size safe
- Guest toilet and powder room
- Butler pantry area
- Maximum capacity: 4 adults

OUTDOOR

- Panoramic oceanfront terrace covering the full ship's width, with private outdoor infinity whirlpool, day beds, a dining table, lounge area, shower and sun loungers

BEDROOM

- Bespoke king-sized bed sleep system
- Large double sofa bed
- Down duvets and pillows
- Extensive pillow selection
- Oversized dressing room

BATHROOM

- Luxurious marble double vanity bathroom
- Spacious bathtub and separate shower room
- Private steam room
- Plush bathrobes and slippers
- Custom bath toiletries and amenities
- Hairdryer and lighted make-up/shaving mirror







A diversity of **culinary offerings**

A selection of
**9 distinctive inclusive
culinary experiences**

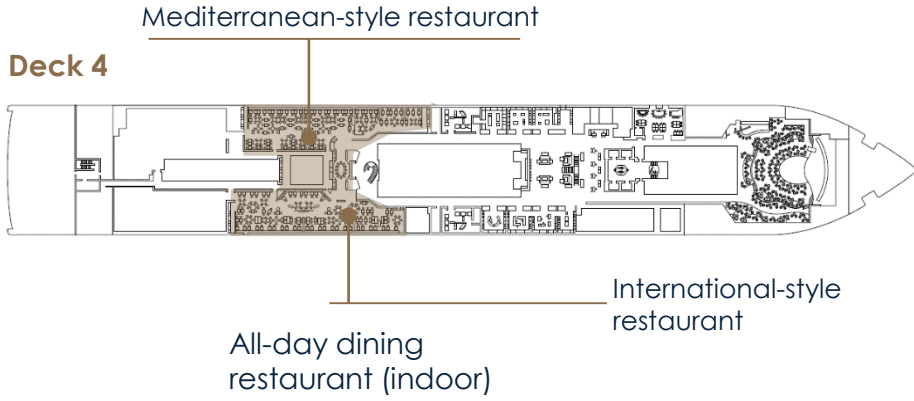
Celebrating global
culinary talents and
cultures, always focusing
on **healthy** eating and
local sources

CULINARY EXPERIENCES

- Elegant all-day dining restaurant
- Sophisticated concept restaurant celebrating up-and-coming chefs
- Pan Asian restaurant
- Steakhouse experience
- Mediterranean-style restaurant
- International-style restaurant
- Coffee lounge
- Poolside dining
- Chef's kitchen with private dining and culinary school
- In-suite dining

CULINARY EXPERIENCES – LOCATIONS

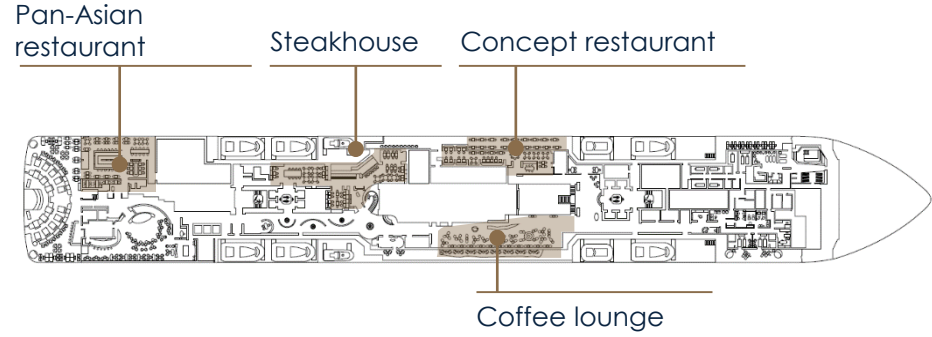
Deck 4



Deck 11



Deck 5



	Deck	Indoor Seating	Outdoor Seating	Total Seating
All-day dining	11	284	90	374
Pan-Asian	5	80	26	106
Steakhouse	5	96	10	106
Concept	5	50	24	74
Italian-style	4	216	-	216
Mediterranean-style	4	190	-	190
Chef's Kitchen	10	12	-	12
Coffee lounge	5	68	16	84

Reinventing entertainment

An **effortless, cosmopolitan** atmosphere to enjoy and **discover talents** from around the world

The perfect blend of **vibrancy** and **privacy** across more than **10** indoor and outdoor bars and lounges

ENTERTAINMENT EXPERIENCES

- Lobby bar
- Observation lounge
 - Lounge
 - Whisky bar
 - Cigar room
 - Chef's kitchen and private dining room
- Main lounge
- Poolside aft lounge
- Coffee lounge
- Several poolside and outdoor bars and lounges
- Casino
- Art gallery





An **all-around**
wellbeing
experience
inspired by **our**
love for the sea

Over **700 sqm**
(7,535 sq ft) of in- and
outdoor spa facilities for
pure relaxation and
wellness

Wellness experiences
in **each destination**
will make relaxation and
rejuvenation enjoyable
onboard and **ashore**

Bespoke balanced
nutrition and **sleep**
programmes

Over **270 sqm**
(2,906 sq ft) of fitness
facilities with the latest
equipment

A panoramic **running**
track

A **fitness studio** for group
or personal training

An **outdoor
experience**
inspired by the
**Ocean State
of Mind**

Generous outdoor decks,
of over **2,500 sqm** (26,909
sq ft) with water
as a focal point

3 outdoor pools,
and **64** private cabanas

1 indoor pool
with retractable
glass roof, largest
and only in category
at **1,200 sqm (12,917 sq ft)**

Several **in- and outdoor
whirlpools**





AFT POOL ON DECK 5



INDOOR POOL WITH GLASS ROOF



INDOOR POOL WITH GLASS ROOF



AFT POOL ON DECK 10



AFT POOL ON DECK 10



PANORAMIC POOL ON DECK 12



PANORAMIC POOL ON DECK 12



Explora
JOURNEYS

FEEL THE
OCEAN STATE OF MIND

travelpartners@explorajourneys.com